



**DONGGUAN GRAIN GOLD ELECTRONIC  
TECHNOLOGY CO.,LTD**

# Company Profile

**Integrity / Innovation / Passion / Insisting**



# Contents



- 01 Company Profile
- 02 Product application
- 03 Production Profile
- 04 Quality Guarantee
- 05 Key Customers



**Grain Gold**

A large circular graphic with a blue border and a white inner ring. The background of the circle is a photograph of a bright sun over a blue ocean. The sun is in the upper left quadrant, creating a lens flare effect. The ocean is in the lower half of the circle. The circle is set against a light gray background that has a semi-circular shape on the left side.

**PART 01**  
**ABOUT US**

**Address**

Building A, Wanji Industrial Park, 252 Jinsha East Road, Shipai town, Dongguan City

**Date of establishment**

Aug, 2015

**Workshop area**

12000m<sup>2</sup>

**Staff**

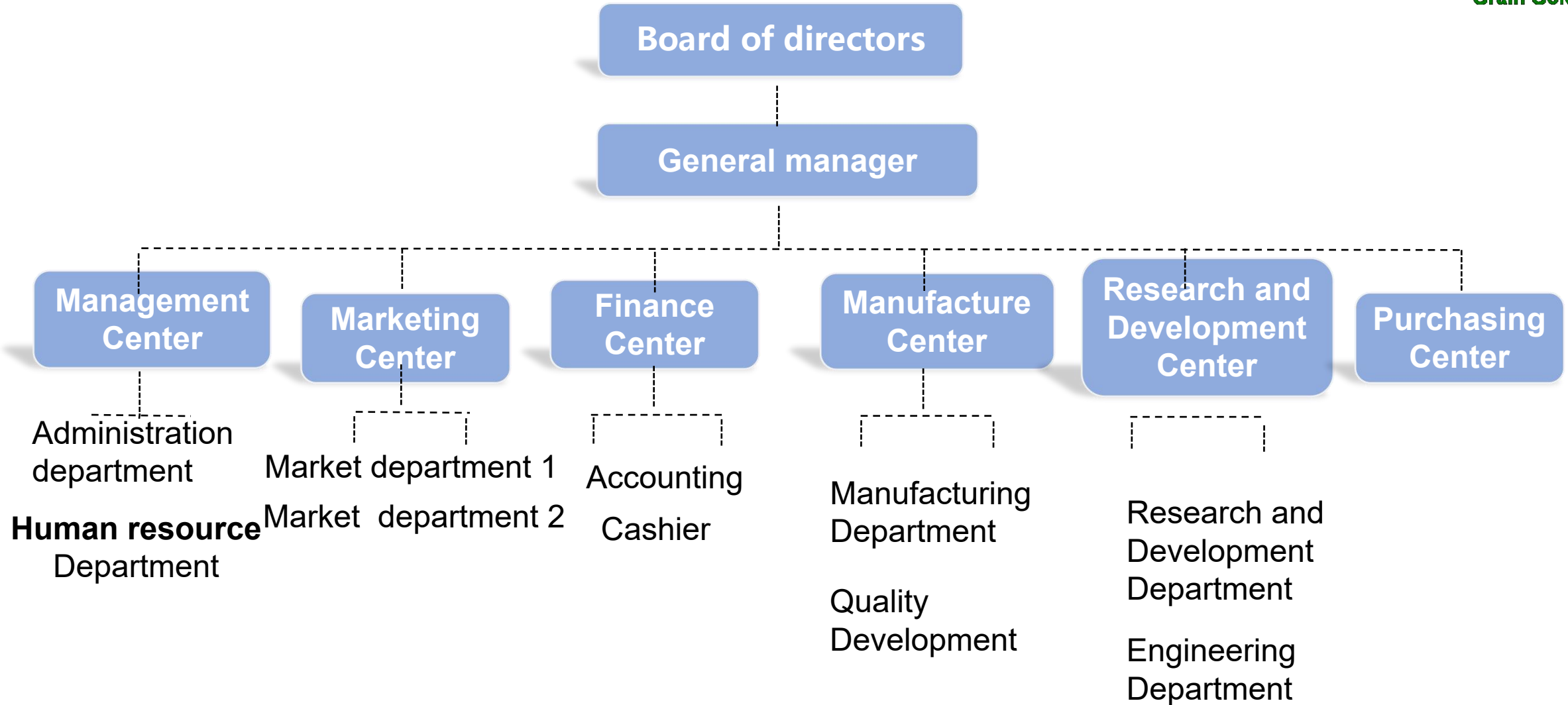
320

**Main Products**

Optical axis key switch, micro-switch

**Capacity**

Current capacity: 300 thousand sets/ month  
objective capacity: 500 thousand sets/ month





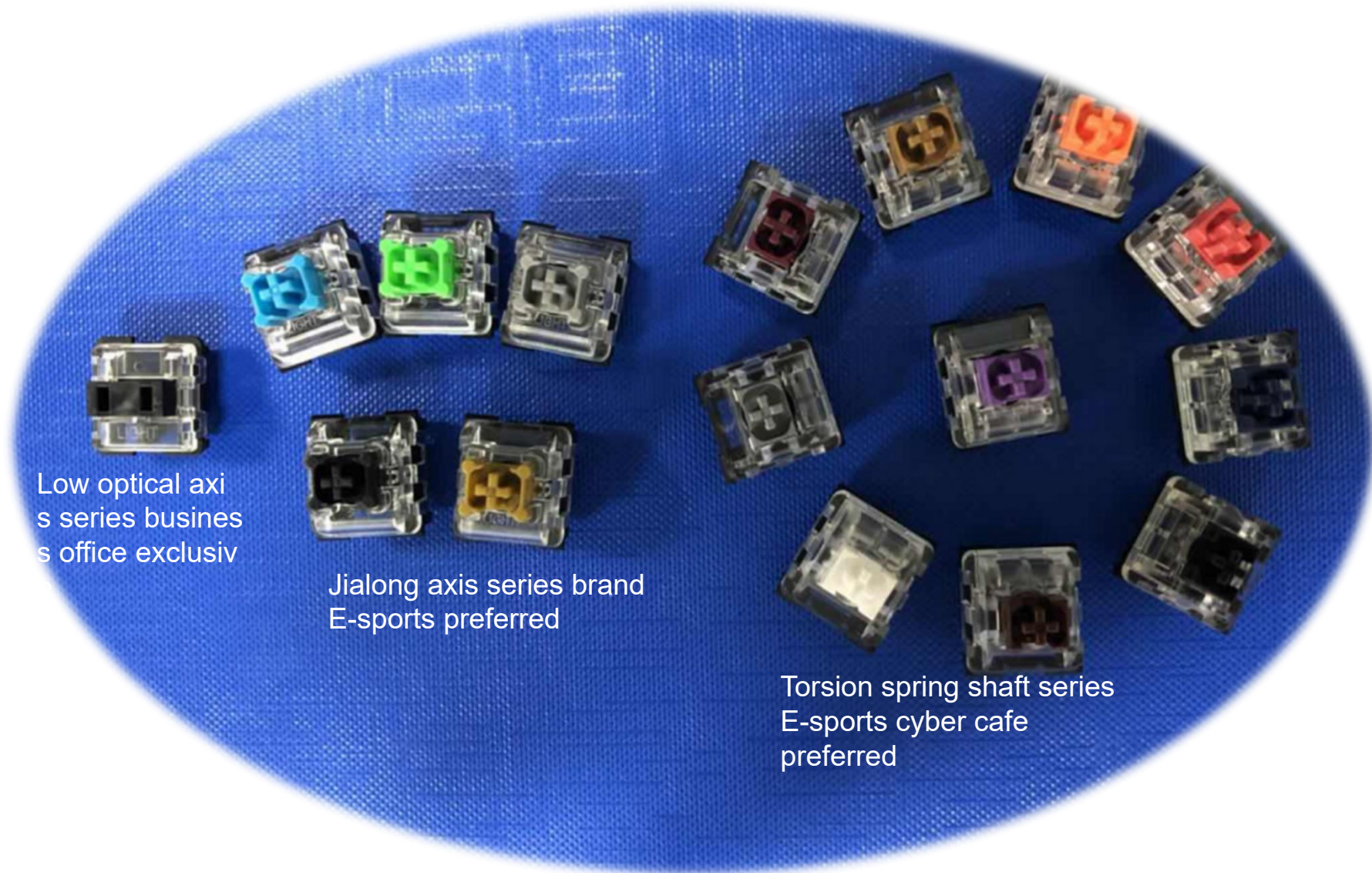
**Grain Gold**

**PART 02**  
Products  
and  
Applications





Grain Gold



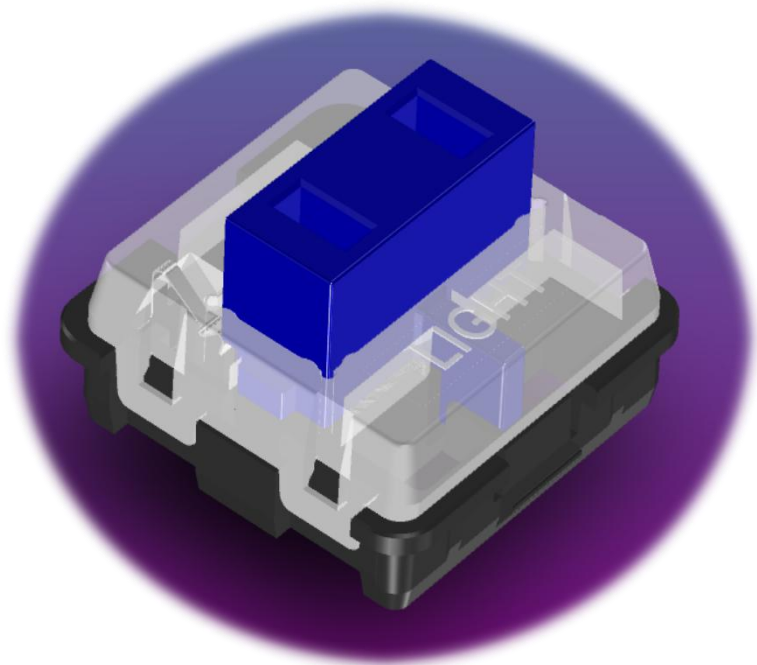
Low optical axis series business office exclusive

Jialong axis series brand E-sports preferred

Torsion spring shaft series E-sports cyber cafe preferred



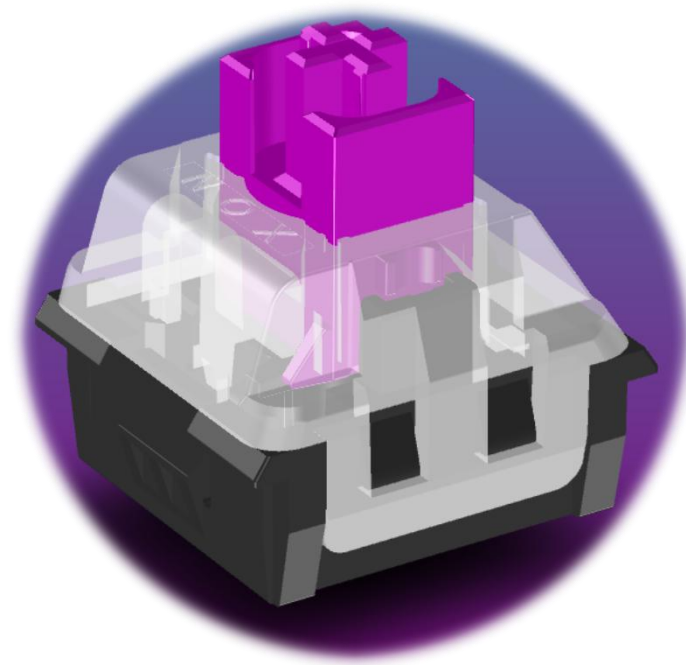
Grain Gold



Low optical axis series



Jialong axis series

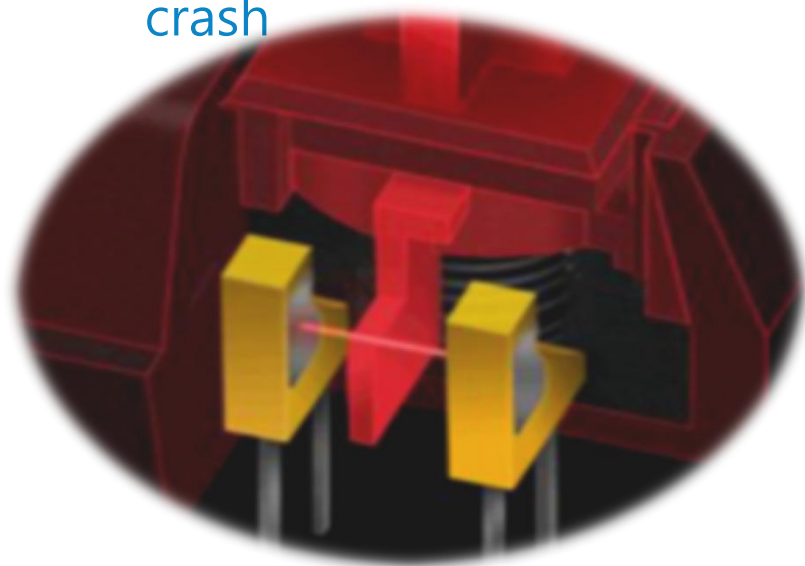


Torsion spring shaft serie

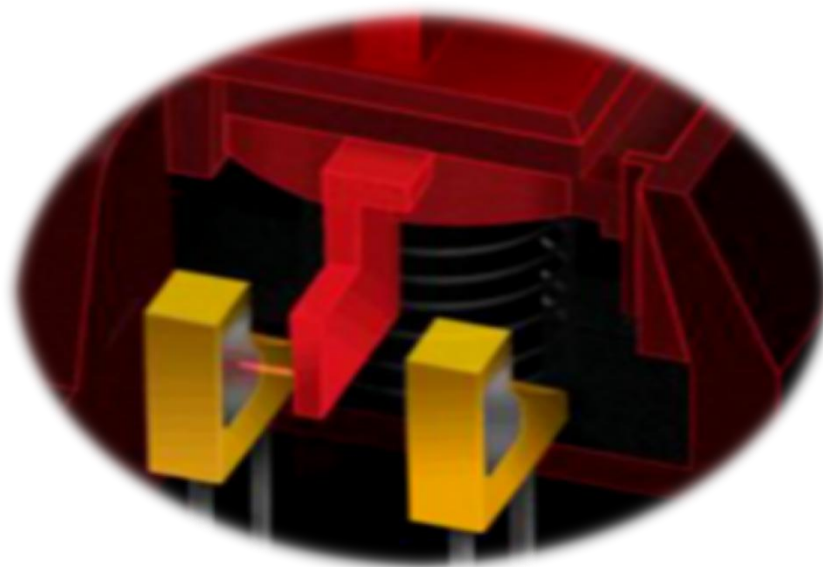




**Optical axis key switch:** The optical axis key switch releases operating order by cutting through or conducting infrared optical pulse signal. It is a new mechanical shaft that can configure and operate paragraph by the needs of experienter, and it can make a crisp metal crash



Infrared conduction



Infrared blocking





## The introduction of new optical axis's advantages

**High reliability:** The new optical axis adopts infrared optical pulse signal, so there is no contact point and no wear while inducting, its signal is stable and reliable, even high click frequency won't lead to flashover and no reaction of double click, consecutive click caused by metal terminal oxidation, aging deformation and other issues. It can be used over 50000 hours under the continuous power on state, it can be operated over 80000000 times.

**High reliability:** There is no such issue as mechanical contact jitter. No miscellaneous signals, no delay in switch, the operation on it is more quick and precise.

**High sensitivity:** The new optical axis adopts infrared optical pulse reaction, so no metal contact, its response is fast and less than 1ms; Long-term usage will not lead to texture change. Its key feedback strength and tone quality is consistent.

**High environmental adaptability:** The half-life period of texture and tone quality prolonged 10 times than terminal mechanical shaft. Even long-term usage in wet, dust, and complex environment can not change its tone quality, texture, Long-term usage will not lead to texture change. Its key feedback strength and tone quality is consistent

**User DIY:** The new optical axis cancels terminal mechanical shaft design and adopts hot-swappable plug-in design, it doesn't need to weld with PCB, users can install a new optical axis that has suitable texture and strength, and switch of normally closed and open mode by their affection in order to keep clear and Maintain.

**High cost-effective:** It adopts hot-swappable plug-in design, so, it doesn't need to weld with PCB. The quality of the products is improved and guaranteed; Its material cost and manufacture craft is more optimized, which leads to a stronger competitive power.



The new optical axis has broken through the technical limitations of the traditional terminal mechanical shaft. In the comparison of internet cafes used for more than five years, its technology and quality advantages of high life and high stability have been fully demonstrated, which has been highly recognized by the experience user.

**All series of our products in our company can realize customized service for customers' needs of texture, color, tone quality, LOGO, etcetra.**

# Product Application





**Grain Gold**

A large circular graphic with a blue border and a white inner ring. The background of the circle is a photograph of a bright sun over a blue ocean. The sun is in the upper left quadrant, creating a lens flare effect. The ocean is in the lower half of the circle, meeting a clear blue sky at the horizon.

**PART 03**  
Production profile



# Workshop and Equipments (1)



Grain Gold





**Grain Gold**

A large circular graphic with a blue border and a white inner ring. The background of the circle is a photograph of a bright sun over a blue ocean. The sun is in the upper left quadrant, creating a lens flare effect. The ocean is in the lower half of the circle, with a clear horizon line. The sky is a clear blue with some light clouds.

**PART 04**  
Quality insurance



## Quality control tools

### ISO 9001

ISO 9000 series standards are about quality management and quality assurance issued by International Standardization Organization in 1987. And it is generic in the worldwide.

### ISO 14000

ISO14000 series standards are frame files for environment management that intend to promote the improvement of global environment quality, in order to enhance the environment consciousness, managing ability and insurance measure of organizations( Company, enterprise) to improve environment quality

### SPC

Statistical Process control is a process control tool operated by mathematical statistics methods. It analyzes and evaluates the produce course and perceives the omens caused by systematical factors through feedback messages in time, taking measures to eliminate the impacts, which makes the course keep controlled state which is only influenced by stochastic factors to control the quality

### FMEA

Failure mode and effect analyze is potential failure mode and result analysis or shortened to FMEA. FMEA respectively analyzes subsystem, parts that consist of the products and each processes that consist of the course, finding all potential failure mode and analyzing its possible results to take necessary measures in advance.

### MES

MES is defined as a workshop oriented information management system located between the plan management system in the upper layer and the industry control in the lower layer. It provides plan implement, trace, and current state of all resources( personnel, equipment, material, and clients' needs for operators, and administrators





Two dimensional  
image analyzer



Observation microscope



Life tester



Parameter control measurement



High-power microscope



Hot and cold shock tester



ROHS analyzer





# 04 Technical and legal safeguards



**Grain Gold Electronic** processes many invention patent and practical new technical patent. Our company has lots of technical patent in the area of optical axis switch and obtain the title of Shenzhen Jingtai electronic “qualified supplier”, we provide adequate technical and legal guarantee for your choose and usage

**Patent number of Shenzhen Jingtai Electronics: 2015200649863.8**





**Grain Gold**

A large circular graphic with a blue border is centered on the page. Inside the circle is a photograph of a bright sun low on the horizon over a blue ocean. The sun's rays are visible, and the sky is a clear blue with some light clouds. The ocean has gentle waves.

**PART 05**  
Main  
Clients



Grain Gold

Juchen  
Technology

RAPOO 雷柏

NEWMEN 新贵

Zidli 磁动力

LIGHT®

Fühlen 富勒® | 竞阶未来

PAYRIVERS 铂川科技

G.TECH 智迪

NOX  
GAMING GEAR

Great Wall

清华同方  
TSINGHUA TONGFANG

GOLDEN FIELD 金河田  
科技生活 以人为本  
中国驰名商标



Akko

B.FRIEND.IT

msi

MOTOSPEED  
摩豹

IF3

CJ

TAIOU 钛度

HEIYIJIRY  
黑技

TEAMWOLF  
VICTORY DESIRE



**DONGGUAN GRAIN GOLD  
ELECTRONIC TECHNOLOGY  
CO.,LTD**

**Thanks!**

**Integrity / Innovation / Passion / Insisting**

